

Villa Natura

Saint Lucia





This stunning, commissioned modern house, sitting in spectacular terraced tropical gardens is the vision of the current owners and their architect. The brief was to create a sustainable building using as many local materials as possible, thus minimizing the carbon footprint. Coral stone blocks from Barbados, teak doors, and windows from Trinidad, clay tiles from St. Lucia and the Dominican Republic all form part of the stunning interior design of the villa. Air conditioning is kept to a minimum by adjusting louvers and the breeze flowing over the water channels that run around the building. All doors and windows slide back to make the house open to nature.

The house was designed to frame the spectacular 360° views: Martinique to the north, the Atlantic ocean to the west, where the rising full moon is breathtaking and moving around to the beautiful Cas en Bas, due south, down the length of the island you can see the peak of Petit Piton, into the west the Caribbean and the glory of the sunset. The concept of the house merging the inside with the outside and beyond, integrating architecture as an extension of the landscape has been perfectly executed. The Vista is truly exceptional.





The property and gardens are walled with an electric gate that accesses the sweeping driveway, flanked with palms and tropical planting. There is off-street and covered parking for numerous cars. Upon accessing the house you are immediately struck by the generous hall and large main staircase, rising to the equally impressive open plan living area, dining, kitchen and bar, all with limed wood vaulted ceilings (approx. 20 ft high). There are polished concrete floors throughout. The kitchen and bar are formed from white cement.

PANORAMIC PARADISE

The swimming pool from the first floor has the most amazing views overlooking the Saint Lucia Channel. All living areas and bedrooms have access to terraces while cantilevered roofs offer magnificent, uninterrupted views.

Frameless floor to ceiling windows with deep solid coral stone reveals create an atmosphere of calm. There is plenty of storage, including “his and hers” hanging spaces, bathrooms with step down shower include bath and separate lavatories.

The white cement vanity units support Vitra double sinks and waterfall taps and the handmade glass tiles are from Lightstreams in San Francisco. The central staircase has been designed to have a lift retrofitted should it be required and have access to the roof.







An additional cloakroom is on this floor. On ground level, the entrance hall leads to a library area and cloak/shower room, then into an approximate 720 ft.² garden room with dining area. French doors open to the barbecue terrace, entertaining terraces and landscaped gardens beyond, including an ornamental waterfall that flows to a lower terrace.

There is an additional bedroom suite on the ground floor and a self contained guest apartment comprising open plan living room and kitchen, bedroom and bathroom and terrace with outside access to pool. The caretakers apartment is also on the ground level as our services: server room, laundry, pool plant. The organic gardens were commissioned to have an emphasis on edible produce and are plantes with citrus, mango, avocado, cashew, marena as well as many native fruits.

There is also a shady greenhouse for salads and herbs. Maintenance and garden equipment is stored in a typical Caribbean “Gingerbread House” which has a sundowner Terrace. Two lookouts offer vantage points to see whales on their spring migration. The gatehouse has a shower, basin and lavatory for staff use as well as storage.

ACCOMODATIONS

5 Bedrooms, 5 Bathrooms,
Living Room, Dining Room,
Kitchen, Cloakroom.

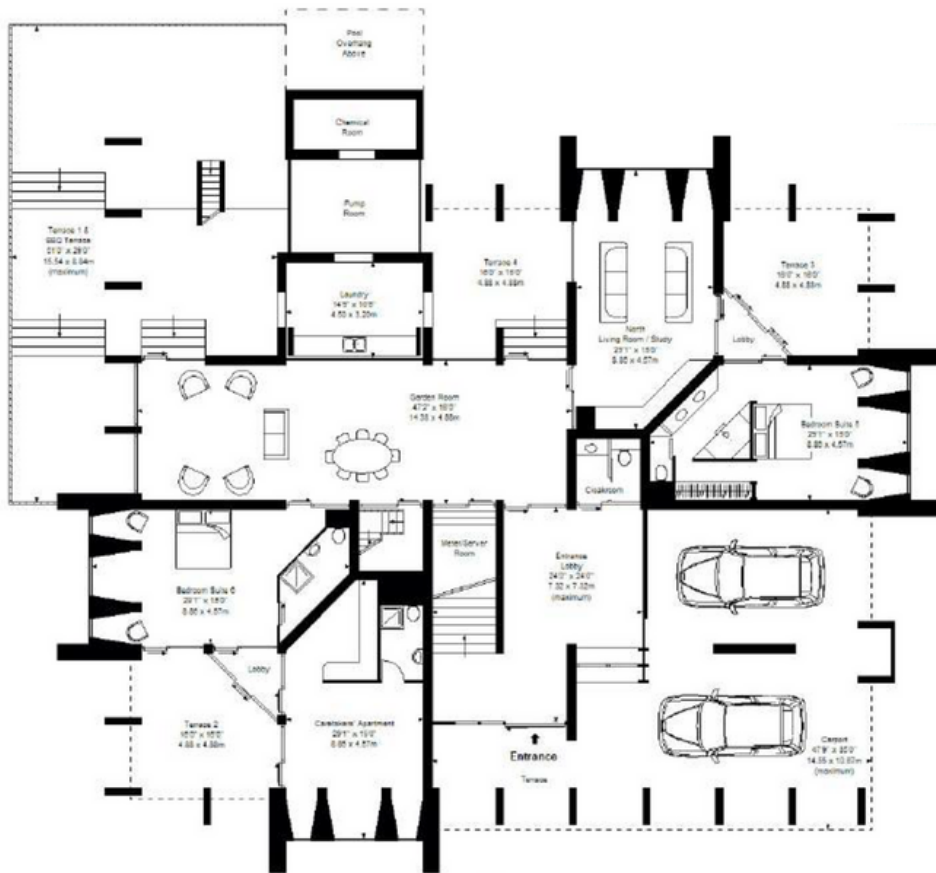
Bedroom Suite 6, Garden
Room, additional Dining Room,
Self Contained Apartment,
Caretakers Accommodation,
Library Area, Hall, Cloakroom.

Server Room, Laundry /
Utility Room, Plant Room,
Gatehouse, Gingerbread House.

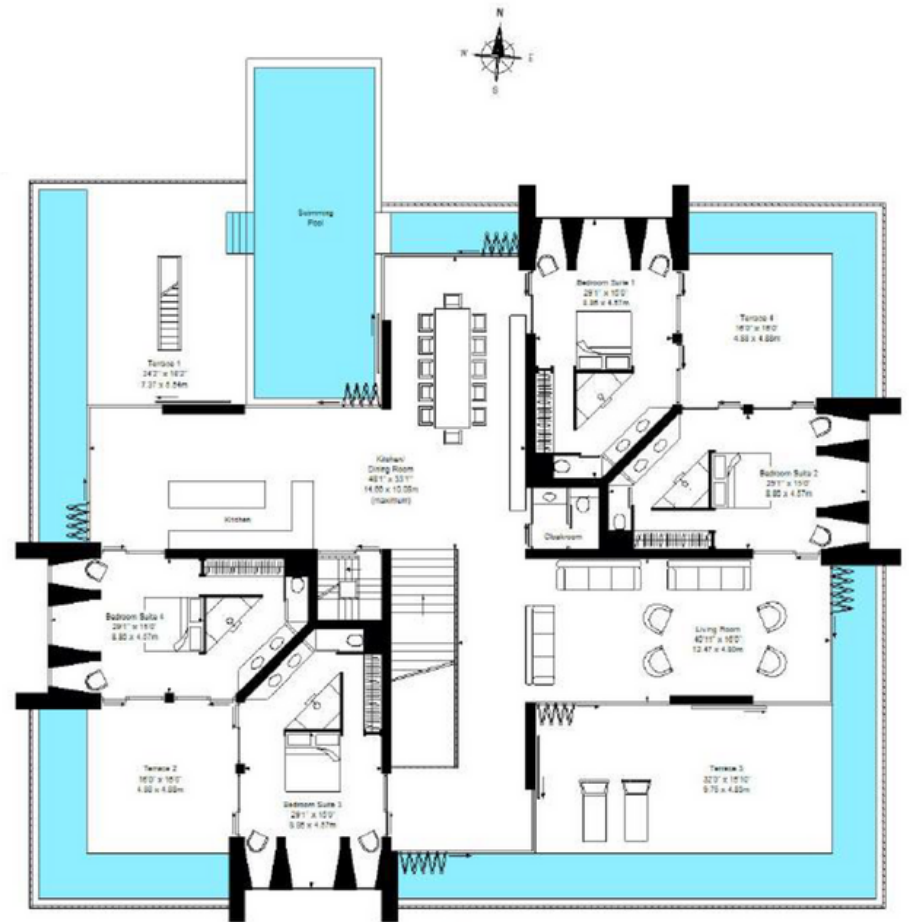
8 Terraces including a BBQ
Terrace, Swimming, Pool, a
Carport for four cars with
further off-street parking.

The property is in
approximately 1 acre.





Ground Floor



First Floor

Disclaimer: While every attempt is made to ensure accuracy, this floor plan is for guidance only. The measurements, dimensions, specifications, and other data shown are approximate and may not be to scale. We assume no responsibility for the accuracy of this floor plan or for any action taken in reliance thereon. This floor plan does not create any representation, warranty or contract. All parties should consult a professional, such as an architect, to verify the information contained herein.

POSITION

The Sovereign island of Saint Lucia, in the west Indies is in the eastern Caribbean Sea, on the boundary with the Atlantic Ocean, and forms part of the Lesser Antilles. It is located north/northeast of the island of Saint Vincent, northwest of Barbados in south of Martinique.

Services: Means water, electricity, landline/broadband, sealed system septic tank.

Tenure: Freehold.

COORDINATES

14.101862, -60.926128



Villa Natura

Saint Lucia

OFFERED AT US\$ 9.5M

CONTACT US

Mark Ritchken

+1 (212) 464-8103

www.nyprg.com

mritchken@nyprg.com

845 Third Avenue, 6th Fl, NYC

[NEW YORK PRIVATE REALTY GROUP]